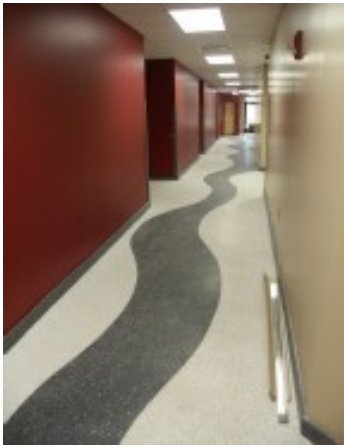


Fire Crash Rescue Station Robins Air Force Base, Georgia



Principal In Charge:
Stephen F. Lazar, AIA

Program / Challenges

The selected site for the Fire/Crash Rescue Station had purportedly been used in the past for the deposit of construction waste. The site was anticipated to contain a significant amount of unsuitable and contaminated soils. In addition, due to the perimeter constraints and the inherent topography, a limited area was available for storm water treatment. The low rate of percolation and the airfield proximity mandate of a dry pond indicated the need for an aggressive retention pond design.

The structure was required to be force protected in accordance with UFC-4-010-01. Sleeping quarters as well as Training Rooms and support offices required significant STC ratings for interior partitions.

Solutions

This 26,000 SF facility includes:

- Emergency Operations Communication Center is located with a commanding view of the Taxiway, Flight Line, and Flight Line Side of the Apparatus Bays.
- For the Operations side the spaces located on the perimeter are Dining, Day Room, Recreation, Training, Physical Fitness, and Communications Center.
- Six double loaded Apparatus Bays accommodate twelve vehicles, six for structural fires and six for airfield emergencies. Bay doors are 19' high X 14' wide.
- Apparatus Bays are open with clear-span trusses for structure.
- The Apparatus Bays and the required 1-hour fire separation between the Bays and the administration area are constructed of site-cast load bearing tilt-up panels.
- Sleeping Quarters for 19 fire/rescue personnel, Latrines, Showers, and Lockers are located in interior spaces.

Client / Contact:

U.S. Army Corps Engineers
Savannah District
Leslie Zuniga, P.E.
100 West Oglethorpe Street
Savannah, Georgia
(912) 652-5090

Location:

Robin Air Force Base
Georgia

Completion Date:

2000

Project Size:

\$26,000 SF

Performance Period:

2005 thru August 2007

Completion Date:

30 August 2007

Construction Cost:

\$6,900,000



Relevance to Emergency Operations Center for Nassau County

- This facility is a 24-hour emergency operations facility with back-up power.
- The building and site have been designed in accordance with the DoD Anti-Terrorism Force Protections Criteria UFC 4-010-01.
- The key Design Team members (Architectural, Structural, Mechanical, Electrical, and Plumbing) are the same personnel assigned to the Nassau County EOC.